

## GHANA POSTAL MARKINGS SINCE 1957, SUPPLEMENT 1 - Nov 2021

### Corrections / Additional Information

pp.6/7 There were 138 Districts in Ghana in 2006, not 137 as stated. Wenchi Municipal District, between Tain and Techiman Municipal, was omitted from the map of the Brong Ahafo Region.

p.19 Offices under Hohoe: Bowiri Amanforo (not Bonwiri)

pp.26-32 2017 GhanaPost lists. By January 2020, these extensive lists of offices had been removed from the GhanaPost website, replaced by a much shorter listing similar to that provided in 2015 (pp.22-25). Postmarks from ten locations given only in the 2017 lists (p.33) have now been discovered, showing them to be a credible source of information on offices opened after 1967.

pp.31/33 Volta Region, Kpando District: Banda and Bowieso, which were thought to be two separate offices, together form the name of a single office, Banda Bowieso (postmark inscribed Banda Bonwieso).

p.33 delete Adutor, Agbakofe, Apagya, Atuna, Banda Bowieso, Biriwa, Busunya, Ekoso, Kusanaba, Nyameani – postmarks now seen (pages 4-5 of this Supplement).

p.37 add note: Esaase Kwahu and Kwahu Esaase are probably the same office.

p.58 Ghana Handstamps: Although stamps inscribed or overprinted Ghana were available from Independence Day, aerogrammes **inscribed Ghana** were not issued until 5 October 1959. **Some overprinted stamps and aerogrammes were also handstamped.**

pp.125/180 Christiansborg / Osu: evidence that Christiansborg became Osu is provided by a 1983 registered cover with handwritten Osu etiquette and Christiansborg type 19 postmarks.

p.155 Kuntanase (Kumasi): attribution of Kuntanasi 21.1 to this office is supported by the return address on a 1958 cover from Nyameani.

pp.169/171 Ngulofolo (also known as Nkrofro) changed its name to Nkroful by 1966 (mapcarta.com).

pp.174/190 Nwereme and Suma Ahenkro appear to be at the same location, although the 1967 Handbook contains entries for both office names.

### Ghana Post Offices Opened after Independence (pages 34-36)

Accra New Town	<del>1962</del>	1961	Accra Sports Stadium	<del>2000</del>	1979
Adrobaa	<del>1967</del>	1963	Adutor		(1974)
Agbakofe	1991		Apagya		(1973)
Atuna	1980		Baika Gbohome		1960
Banda Bowieso	(1980)		Biriwa		(1982)
Busunya	(1980)		Castle PO Accra	<del>1975</del>	1973
Ekoso	(1977)		Gyankufa	<del>1962</del>	1961
Kusanaba	(1974)		Kwadaso	<del>1962</del>	1960
Manso Abore/Abori	<del>1967</del>	1964	Nyameani		(1984)
Ofoman	<del>(1967)</del>	1964	Sakumono	<del>1997</del>	1995
Tema Newtown	<del>1962</del>	1961	Tikobo No 1	<del>1964</del>	1963
Woraso	<del>(1967)</del>	1962			

### Instructional Markings (pages 45-59)

**First Day Cover:** further examples of this handstamp, with postmark dates between 15 Apr 1958 and 5 Oct 1959, have been seen on commercial mail sent to Accra, and also on philatelic items postmarked Accra, Accra Airport and Giffard Camp.

**Stamps Affixed By Sender:** Manuscript markings have been seen on registered first day covers (1957 Black Star Line and 1958 United Nations Day issues), explaining that the excess franking was applied by the sender.



m/s "Excess stamp affixed by sender" (size reduced)



Unrecorded Gold Coast type 21, Accra A, 22 Oct 1957

### Latest Dates of Gold Coast Postmarks used after Independence (pages 60-64)

Marks not previously reported used after Independence are shown in **bold**.

Abossey Okai	21	23 Nov 1957	Cape Coast	R1	6 Nov 1957
<b>Accra machine (Proud type M2)</b>		<b>1 Apr 1958</b>	Dodowa	16	8 Dec 1957
<b>Accra</b>	<b>20</b>	<b>6 Mar 1957</b>	Effiakuma	21	30 Oct 1957
Accra	21	19 Mar 1957	Ejura	16a	26 Nov 1957
<sup>1</sup> <b>Accra A</b>	<b>21</b>	<b>22 Oct 1957</b>	<b>Gomoa Dominase</b>	<b>21</b>	<b>9 Apr 1957</b>
<sup>2</sup> Agona Duakwa	16a	19 Sep 1957	Kankang	21	19 Nov 1957
Akoasi	21	10 Dec 1957	Kokofu	16	?? Oct 1957
Akorabu Kukua	21	26 Sep 1957	Kukuom	21*	20 Nov 1957
Akwatia	16a	30 Sep 1957	Logba Alakpeti	21	18 Jul 1957
Asaafa	21	29 Mar 1957	Maaban	21	7 Dec 1957
<b>Asesewa</b>	<b>19</b>	<b>30 Nov 1957</b>	<b>Mangoase</b>	<b>16</b>	<b>26 Sep 1957</b>
<sup>3</sup> Asesewa	21*	14 Aug 1957	Nsuta Wassaw	16a	?? Nov 1957
Asikuma	20a	17 Sep 1957	Odumasi Akim	19	12 Oct 1957
Atiavi	17	18 Dec 1957	Prestea	R1	31 Oct 1957
<sup>4</sup> Avenofeme	19	15 ??? (1957)	Samreboi	20	1 Aug 1957
Awaso	21*	21 Nov 1957	<b>Savulugu</b>	<b>21</b>	<b>31 Aug 1957</b>
Ayensudu	21*	5 Jul 1957	<sup>5</sup> Senchi A	16a	27 Nov 1957
<b>Bawku</b>	<b>16</b>	<b>31 Jul 1957</b>	Swedru	19	14 Nov 1957
<b>Bekwai Parcels</b>	<b>16</b>	<b>12 M?? (1957)</b>	<b>Takoradi Market Circle Registered R3</b>		<b>15 Aug 1957</b>
<b>Bodomase</b>	<b>19</b>	<b>5 Jun 1957</b>	<b>Tsito A</b>	<b>16a</b>	<b>11 Oct 1957</b>
Cape Coast	19a	12 Nov 1957	Woe	21	22 Oct 1957

<sup>1</sup> see illustration above; <sup>2</sup> not "A"; <sup>3</sup> misread of Asiakwa; <sup>4</sup> in use 1957 (Proud); <sup>5</sup> A omitted in error.

## Checklist of Ghana Postmarks by Type (pages 65-77)

Postmarks added or deleted in this supplement.

### Type 12c

Anomabu C      Nsoatre Post Office      Postmaster Afidwase

### Type 19

Adrobaa	Adutor	Apagya	Atuna	Ave Dakpa	Dakpa C
Baika Gbohome (replaces <del>Baika-Gbi</del> )		Bamiankor	Banda Bonwieso		Biriwa
Busunya	Denkyira Kyekyewere	Ekoso	Gyankufa	Hiawa	Kusanaba
Manso Abore	Mpasaaso No2	Ntunkumso	Nyameani	Senchi Counter	
Sovie	Sports Stadium PO AR	Telegraph Berekum	Tema Comm 7. C	C 1	Tema Comm 11 Mails
Woraso					

### Type 20 / †20b

†Kaneshie Mails 2 (replaces ~~†Kaneshie Mails~~)      †R.A.C. Cape Coast      Sefwi ~~Bekwai~~ Bekwai (typo)  
~~Somanya~~ (misread of Suhum A)

### Type 21

\*Accra North R.C.3      \*Asin Beraku      \*Awisam      \*Nkawkaw 3      \*Oda C2      \*Ofoman  
 \*Saltpond P      \*Swedru R.E.1      \*Takoradi P      \*Winneba C  
~~\*Registered Cape Coast~~ (misread of Beula Road Cape Coast 21.1)

### Type 24

Accra C Mails 2	Accra Central	Accra Central Air 3	Accra RDC3
Accra North PLB	Accra Sports Stadium	Agbakofe	Aiyinasi
Akropong Akw	EMS Akatsi	Akim Manso	Akim Manso <del>RE</del> Pmr
EMS Anloga	<del>Anloga-Kumasi</del>	Anyinam Registration	<del>Arts Centre Mails</del>
Asiakwa Mails	Bator	Bawjiase Mails	Begoro
Begoro Mails	Bolgatanga RE 2	Bomfa Mails	Bompata
<del>Bongo Post Office</del>	Bosuso Mails	Burma Camp Pmr	Cape Coast RAC
Charlie Junc. KF 'M'	Denu Pmr	Donkokrom	EMS Duayaw Nkwanta
<del>Dankwa RDO</del>	Efia <del>Pm2</del> Pmr	Fantinyankumasi	Goaso MO & POC
Hwidiem Pmr	Jumapo Tels	EMS Kade	Kenyase
Kwahu Praso Mails	Mamponen	Ministry B.O. Accra	Nkoranza Registration
Oda Counter	Odorkor Mails	Odumasi Ash Mails	Paga
Prampram Mails	Sogakope Pmr	Suhum Mails 2	Sunyani Mails
Sunyani RDC	Swedru Parcels	Tamale	Tamale POC
Teshie Pmr	Teshie-Nungua <del>Est</del> Mails 2		Wiawso POC
EMS Winneba	Worawora		

Type 25

Koforidua

Type 26

Accra Central Mails 24 Fanti Newtown Mails Jamestown Mails

Type 27

~~Anomabu C~~ (type 12c) Kpandu M Tema Bills Tema C7 Mails

Type 30

Arts Centre Mails (30) Kokofu Post Off. (30) Osu RAC (30) Postmaster / Ghana (30)  
Tema C1 / Registration (30i) Weija..... (30)

## Unlisted Post Offices (p.33) – Postmarks now Recorded

**ADUTOR** in 2017 PO list (Volta Region, Keta District), not in 1956/67 Handbooks. 7 miles SE of Sogakofe, 5.95°N, 0.70°E.

ADUTOR 19 19.1 (1974)

**AGBAKOFE / AGBAKOPE** in 2017 PO list (as Agbakope, Volta Region, Keta District), not in 1956/67 Handbooks. 8 miles E of Sogakofe, 6.03°N, 0.71°E.

AGBAKOFE 24 24.1 1991

**APAGYA** in 2017 PO list (Ashanti Region, Bekwai District), not in 1956/67 Handbooks. Apeja on US military map, 4 miles N of Prasu, 5.98°N, 1.38°W.

APAGYA 19 19.1 (1973)

**ATUNA** in 2017 PO list (Brong Ahafo Region, Sunyani District), not in 1956/67 Handbooks. Two possible sites: one is 8 miles SW of New Drobo, 7.50°N, 2.91°W; the other is 8 miles S of New Drobo, 7.48°N, 2.80°W.

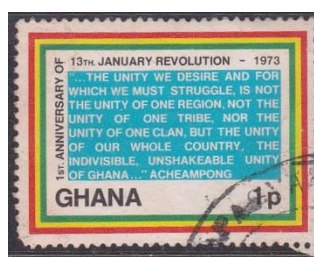
ATUNA 19 19.1 1980



Adutor 19.1



Agbakofe 24.1



Apagya 19.1



Atuna 19.1

**BANDA BONWIESO / BANDA BOWIESO** in 2017 PO list (as Banda Bowieso, Volta Region, Kpando District), not in 1956/67 Handbooks. 9 miles S of Kpandai, 8.35°N, 0.07°W.

BANDA BONWIESO 19 19.1 (1980)

**BIRIWA** in 2017 PO list (Central Region, Cape Coast District), not in 1956/67 Handbooks. 2 miles W of Anomabu, 5.16°N, 1.15°W.

BIRIWA 19 19.1 (1982)

**BUSUNYA** in 2017 PO list (Brong-Ahafo Region, Nkoranza District), not in 1956/67 Handbooks. 8 miles NE of Nkoranza, 7.69°N, 1.66°W.

BUSUNYA 19 19.1 (1980)

**EKOSO** in 2017 PO list (Eastern Region, Kibi District), not in 1956/67 Handbooks. 3 miles E of Abomoso, Ekawso on US military map, 6.32°N, 0.69°W.

EKOSO 19 19.1 (1977)



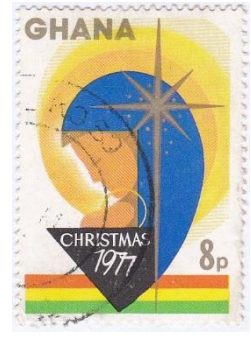
Banda Bonwieso 19.1



Biriwa 19.1



Busunya 19.1



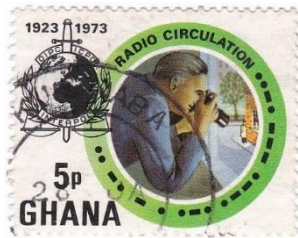
Ekoso 19.1

**KUSANABA** in 2017 PO list (Upper East Region), not in 1956/67 Handbooks. 15 miles S of Sebila, 10.73°N, 0.48°W.

KUSANABA 19 19.1 (1974)

**NYAMEANI** in 2017 PO list (Ashanti Region, Bekwai District), not in 1956/67 Handbooks. 5 miles S of Kwaso, Nyamiene on US Army map, 6.56°N, 1.43°W.

NYAMEANI 19 19.1 (1984)



Kusanaba 19.1



Nyameani 19.1

## Unrecorded or Previously Unillustrated Postmarks from already listed Offices

### ACCRA

ACCRA (20.5 listed, date extension)	20	20.5	1975	1980	arcs 12/15mm, wide CC, close CR
ACCRA	20	20.6	1975	(1987)	arcs 14/14mm, wide CC, wider CR
ACCRA	20	20.7	(1967)		arcs 14/15mm, wide CC, close CR
R.C.2. ACCRA	20	20.22	1978		proofed Feb. 1958



P.O.C.1 ACCRA	21*	21.81	1958		Postal Order Counter
ACCRA CENTRAL	24	24.15	1993	2004	
ACCRA C MAILS 2	24	24.16	2014		
ACCRA CENTRAL AIR 3	24	24.18	1995	1996	
ACCRA RDC3	24	24.53	2002		
ACCRA CENTRAL MAILS 4	26	26.1	1989		was misread as Mails 2, now illustrated



### ACCRA AIRPORT / KOTOKA AIRPORT

ACCRA AIRPORT	19	19.1	1958	(1959)	not previously illustrated
KOTOKA AIRPORT PMR	24	24.10	2002		not previously illustrated



### ACCRA NORTH

ACCRA NORTH P.2	21*	21.2	1989		not previously illustrated
ACCRA NORTH R.C. 3	21*	21.10	(1984)		no year slug
ACCRA NORTH PLB	24	24.29	1999		Post Letter Box (PO Box)?



Accra North P.2 21.2



Accra North R.C.3 21.10  
two strikes from the same cover



Accra North PLB 24.29

## ACCRA SPORTS STADIUM

SPORT STADIUM PO AR	19	19.1	1979
ACCRA SPORTS STADIUM	24	24.1	1992

## ADA

ADA	21*		1957	1974	two types:
(was listed as type 21, should be 21*)	21*	21.1	1957	1973	narrow GHANA, H – 2 <sup>nd</sup> A 6.5 mm
(21.2 not previously recorded)	21*	21.2	1966	1974	wider GHANA, H – 2 <sup>nd</sup> A 8 mm



Sports Stadium PO AR 19.1



Accra Sports Stadium 24.1



Ada 21.1



Ada 21.2

## ADROBAA

ADROBAA	19	19.1	1963	1976
---------	----	------	------	------

## AFIDWASE

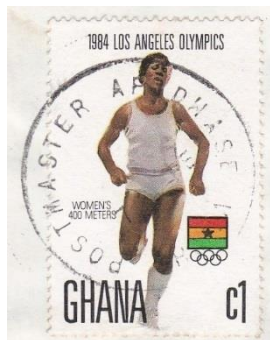
POSTMASTER AFIDWASE	12c	12.1	(1985)
---------------------	-----	------	--------

## AGBOSOME

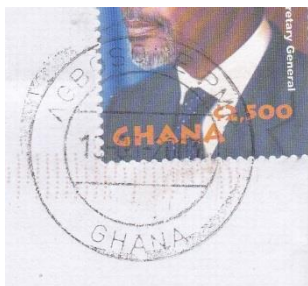
AGBOSOME PMR	24	24.2	2003		not previously illustrated
AGBOSOME REGISTRATION	24	24.3	1997	2002	not previously illustrated



Adrobaa 19.1



Postmaster Afidwase 12.1



Agbosome Pmr 24.2



Agbosome Registration 24.3

## AGONA ASHANTI

AGONA ASH	24	24.1	1999		not previously illustrated
-----------	----	------	------	--	----------------------------

**AIYINASI**

AIYINASI 24 24.3 2000

**AJUMAKO**

AJUMAKO MAILS 24 24.1 2000 2005 not previously illustrated

**AKATSI**

EMS AKATSI 24 24.2 (1995)



Agona Ash 24.1



Aiyinasi 24.3



Ajumako Mails 24.1



EMS Akatsi 24.2

**AKIM MANSO**

AKIM MANSO PMR 24 24.1 2000 was misread as Akim Manso RE  
 AKIM MANSO 24 24.2 2001 2006

**AKROPONG AKWAPIM**

AKROPONG AKWAPIM 20 1957 1982 two types, not previously distinguished:  
 short arcs 4.5/4.5 mm (as originally shown) 20.1 1957 1969 ...ONG AKW... separation 3.5 mm  
 long arcs 7/8 mm 20.2 1957 1981 ...ONG AKW... separation 1.5 mm  
 AKROPONG AKW MAILS 24 24.1 1996 2002 AKW = Akwapim, better image  
 AKROPONG AKW 24 24.3 1993

**AKUMADAN**

AKUMADAN MAILS 24 24.1 2001 not previously illustrated



Akim Manso Pmr 24.1



Akim Manso 24.2



Akropong Akwapim A 20.1



20.2



Akropong Akw Mails 24.1



Akropong Akw 24.3



Akumadan Mails 24.1

## AKYEM ABODOM

AKYEM ABODOM 19 19.1 1967 not previously illustrated

## ANLOGA

ANLOGA REGISTRATION 24 24.3 2002 not previously illustrated  
 EMS ANLOGA 24 24.4 (2002)



Akyem Abodom 19.1



Anloga Registration 24.3



EMS Anloga 24.4

## ANUM

ANUM MAILS 24 24.1 1996 2002 not previously illustrated

## ANYINAM

ANYINAM REGISTRATION 24 24.2 1998

## ARTS CENTRE

ARTS CENTRE MAILS 30 30.3 2001 was misclassified as type 24, not previously illustrated



Anum Mails 24.1



Anyinam Registration 24.2



Arts Centre Mails 30.3

## ASAFO AKIM

ASAFO AKIM 24 24.1 199- not previously illustrated

## ASIAKWA

ASIAKWA MAILS 24 24.1 2006

## ASIN BEREKU / ASIN BERAKU

ASIN BERAKU 21\* 21.2 1958 spelling is BERAKU, predates 21.1

## ASOKORE

ASOKORE TELS 24 24.2 2001 not previously illustrated



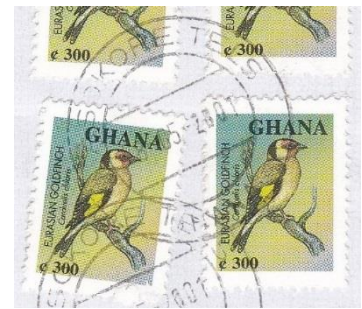
Asafo Akim 24.1



Asiakwa Mails 24.1



Asin Beraku 21.2



Asokore Tels 24.2

**ATIKPUI**

ATIKPUI 19 19.1 1961 1964 not previously illustrated

**AVE DAKPA**

AVE DAKPA C 19 19.1 1959 not previously illustrated, spelling confirmed as Dakpa

**AWISAM**

AWISAM 21\* 21.1 (1978) on Operation Feed Yourself stamp

**AXIM**

AXIM T2 21\* 21.7 1981 not previously illustrated

**AYOMSO**

AYOMSO 19 19.1 (1960) 1977 not previously illustrated



Atikpui 19.1



Ave Dakpa C 19.1



Awisam 21.1



Axim T2 21.7



Ayomso 19.1

**BAIKA GBOHOME**

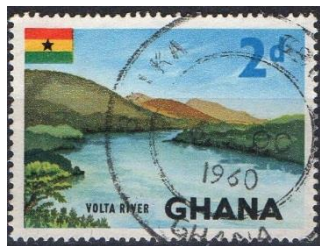
BAIKA GBOHOME 19 19.1 1960 first strike was attributed to Baika Gbi but is probably from Baika Gbohome

**BAMIANKOR**

BAMIANKOR 19 19.1 1969

**BANTAMA**

BANTAMA 24 24.1 1999 2002 not previously illustrated



Baika Gbohome 19.1 (two strikes)



Bamiankor 19.1



Bantama 24.1

**BATOR**

BATOR 24 24.1 2005 2006

**BAWJIASE**

BAWJIASE MAILS 24 24.1 1995

**BAWKU**

BAWKU PMR 24 24.2 1993 not previously illustrated

**BECHEM**

EMS BECHEM 24 24.4 1999 no full stops after EMS, in red



Bator 24.1



Bawjiase Mails 24.1



Bawku Pmr 24.2



EMS Bechem 24.4

**BEGORO**

BEGORO 24 24.1 2005

BEGORO MAILS 24 24.2 2005

**BEKWAI**

BEKWAI 21\* 1957 1978 two types:  
 21.1 1957 1978 narrow GHANA  
 21.2 not recorded proofed Nov. 1959, no \*, wider GHANA



Begoro 24.1



Begoro Mails 24.2



Bekwai 21.1



Bekwai 21.2

**BEREKUM**

TELEGRAPH BEREKUM 19 19.6 1985

**BOBIKUMA**

BOBIKUMA 24 24.1 2004 not previously illustrated



Telegraph Berekum 19.6 (two images)



Bobikuma 24.1

**BOLGATANGA**

BOLGATANGA RE 2 24 24.5 2005 in red  
 BOLGATANGA RE 3 24 24.6 1996 maybe poor strike of 24.5 RE 2?

**BOMFA**

BOMFA MAILS 24 24.1 2006

**BOMPATA**

BOMPATA 24 24.1 2005



Bolgatanga 24.5



Bolgatanga 24.6



Bomfa 24.1



Bompata 24.1

**BOSUSO**

BOSUSO MAILS 24 24.3 2003 corrected spelling vs. 24.2

**BUNSO**

BUNSO 19 19.1 1960 1968 small letters of GHANA  
 BUNSO 19 19.2 1980 large letters of GHANA

**CANTONMENT**

CANTONMENT PMR 24 24.4 2003 not previously illustrated



Bosuso 24.3



Bunso 19.1



Bunso 19.2



Cantonment 24.4

**CAPE COAST**

R.A.C. CAPE COAST 20b 20.3 (1987)

CAPE COAST 21 21.13 (1978) (1981)

This is possibly a Gold Coast postmark (Proud D23/24), with Gold Coast excised but traces remaining.

CAPE COAST RAC 24 24.7 2002

**CHARLIE JUNCTION**

CHARLIE JUNC. KF 'M' 24 24.3 1991 KF = Koforidua

**CHRISTIANSBORG / CHRISTIANSBURG**

CHRISTIANSBORG 21\* 21.2 1964

**COLLEGE OF TECHNOLOGY KUMASI / UPO**

UPO-KSI REGISTRATION 24 24.4 2006 not previously illustrated



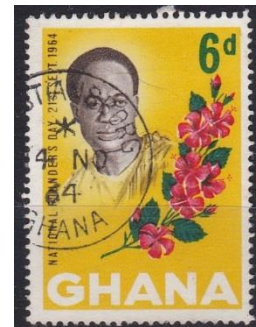
Cape Coast 20.3



Cape Coast RAC 24.7



Charlie Junc. 24.3



Christiansborg 21.2



UPO 24.4

**DABOASE**

DABOASE 19 19.1 1998 not previously illustrated

**DADIESO / DADEASO**

DADIESO 24 24.2 199- in purple, **not previously illustrated**

**DANSOMAN COMMUNITY**

DANSOMAN COMMUNITY COUNTER 31 31.2 2002 **not previously illustrated**

**DENKYIRA KYEKYEWERE**

**DENKYIRA KYEKYEWERE 19 19.1 1969**



Daboase 19.1



Dadieso 24.2



Dansoman Community Counter 31.2



Denkyira Kyekyewere 19.1

**DENU**

**M.O & S.B. DENU 21\* 21.3 1960**

**DENU PMR 24 24.2 2000**

**DONKORKROM**

DONKORKROM 24 24.1 **2001 (2009)**

**DONKOKROM 24 24.6 1993** was included in 24.1, spelling now confirmed as **DONKOKROM**

**DORMAA AHENKRO**

DORMAA AHENKRO 24 24.1 1990 2002 **not previously illustrated**



M.O.&S.B. Denu 21.3



Denu PMR 24.2



Donkokrom 24.6



Dormaa Ahenkro 24.1

**DUAYAW NKWANTA**

**EMS DUAYAW NKWANTA 24 24.3 1997**

**EDWAFO**

**EDWAFO 19 19.1 1960**

**EFIA**

**EFIA PMR 24 24.2 2000 2006** PMR was misread as PM2



EMS Duayaw Nkwanta 24.3



Edwafo 19.1



Efia Pmr 24.2

## EFIDUASI / EFFIDUASI

EFFIDUASI ASH MOC	24	24.3	2005
EFFIDUASI ASH POC	24	24.4	2006

## EKWAMKROM

EKWAMKROM	24	24.1	2003
-----------	----	------	------

## ELLUBO

ELLUBO MAILS	24	24.2	2006	year shown as 1006
--------------	----	------	------	--------------------



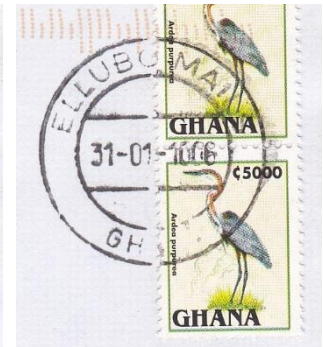
Effiduasi Ash MOC 24.3



Effiduasi Ash POC 24.4



Ekwamkrom 24.1



Ellubo Mails 24.2

## ELMINA

ELMINA MOC	24	24.2	2009
------------	----	------	------

## FANTI NEWTOWN

FANTI NEWTOWN MAILS	26	26.1	1985
---------------------	----	------	------

## FANTI NYANKUMASI

FANTINYANKUMASI	24	24.2	2005
-----------------	----	------	------



Elmina MOC 24.2



Fanti Newtown Mails 26.1



Fantinyankumasi 24.2

## FOSO

FOSO P 21\* 21.4 1968 1970 proofed Dec. 1959

## FWIDIEM / HWIDIEM

HWIDIEM MAILS 24 24.2 2000 2002 not previously illustrated  
 HWIDIEM PMR 24 24.3 2001



Foso P 21.4



Hwidiem Mails 24.2



Hwidiem Pmr 24.3

## GIFFARD CAMP / BURMA CAMP

BURMA CAMP T 23 23.6 1966 proofed Apr. 1961  
 BURMA CAMP PMR 24 24.3 2000

## GOASO

GOASO 24 24.1 2000 not previously illustrated  
 GOASO MO & POC 24 24.3 1998 2004



Burma Camp T 23.6



Burma Camp Pmr 24.3



Goaso 24.1



Goaso MO & POC 24.3

## GYANKUFA

GYANKUFA 19 19.1 1961

## HIAWA

HIAWA 19 19.1 1957

## HO

HO 25 25.1 1985



Gyankufa 19.1



Hiawa 19.1



Ho 25.1

**JAMESTOWN**

**JAMESTOWN MAILS** 26 26.1 (1986) (1988)

**JUANSA**

**JUANSA MAILS** 24 24.2 2002 not previously illustrated

**JUAPONG**

**JUAPONG** 24 24.1 1990 2000 better illustration now available  
**JUAPONG PMR** 24 24.2 2004 not previously illustrated

**JUMAPO**

**JUMAPO MAILS** 24 24.1 1999 may not exist; “discovery” strike is 24.2  
**JUMAPO TELS** 24 24.2 1999



Jamestown Mails 26.1



Juansa Mails 24.2



Juapong 24.1



Juapong Pmr 24.2



Jumapo Tels 24.2



EMS Kade 24.2

**KADE**

**EMS KADE** 24 24.2 2001

**KANESHI / KANESHIE**

**KANESHIE MAILS 2** 20b 20.1 (1980) 1987 originally recorded as Kaneshie Mails, because the 2 was not visible on the 1985 discovery strike

**KANYASE / KENYASE**

**KENYASE** 24 24.3 2005



Kaneshie Mails 2 20.1, discovery strike and a second strike clearly showing the 2



Kenyase 24.3

## KOFORIDUA

**KOFORIDUA A** 20 20.1 1957 (1982) was recorded as 20.1 – 20.3

There appears to have been only one datestamp, the apparent variations arising from imperfections in strikes. From 1957 there are consistent, small gaps in the inner rim, such as above the second A of GHANA. From December 1965, there is also a consistent, prominent gap in the outer rim between the A of Koforidua and the following A.

**KOFORIDUA** 25 25.1 1979



Koforidua 20.1



gap in inner rim



gap in outer rim



Koforidua 25.1

## KOKOFU

**KOKOFU POST OFF.** 30 30.1 (2005)

## KOMENDA

**KOMENDA PMR** 24 24.2 2002 2003 not previously illustrated

## KPANDU

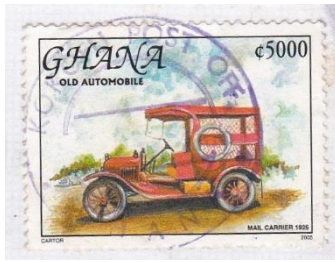
**KPANDU M** 27 27.1 (1986)

## KUKURANTUMI

**KUKURANTUMI MO & POC** 24 24.3 2002 not previously illustrated

## KUMASI

<b>KUMASI</b>	20		1957	1985	at least 3 similar: 20.2 violet 1976
line from I passes between G and H		20.1	1958	1973	outer rim gap over UM Feb58-
line from I meets left arc		20.2	1958	1980	outer rim gap at 2 o'clock Mar58-
line from I touches H		20.3	1958	1968	outer rim gap/weakness near K Mar58-
<b>KUMASI Z</b>	21*	21.17	1977		



Kokofu Post Off. 30.1



Komenda Pmr 24.2



Kpandu M 27.1



Kukurantumi MO & POC 24.3



Kumasi Z 21.17

## KWAHU PRASO / KWAHU PRASU

**KWAHU PRASO MAILS** 24 24.2 1993

## MAFI KUMASE / MAFI KUMASE

MAFI KUMASI 24 24.1 2001 **not previously illustrated**

## MAMPONTEN

**MAMPONTEN** 24 24.1 2005

## MAMPROBI

MAMPROBI MAILS 20b 20.2 1985 **confirmed as type 20a 20b**



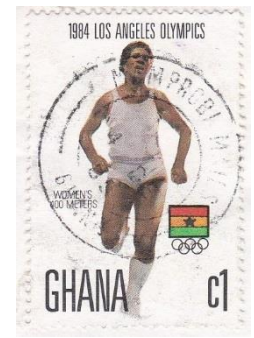
Kwahu Praso Mails 24.2



Mafi Kumasi 24.1



Mamponten 24.1



Mamprobi Mails 20.2

## MANDO

MANDO MAILS 24 24.1 2000 **not previously illustrated**

## MANSO ABORE / MANSO ABORI in 1967 Handbook (Abori) and 2017 list (Abore).

**MANSO ABORE** 19 19.1 1964

## MANSO AMENFI

MANSO AMENFI 24 24.1 1999 **not previously illustrated**

**MANYA KPONGUNOR**

MANYA-KPONGUNOR MAILS 24 24.2 199- 2000 not previously illustrated



Mando Mails 24.1



Manso Abore 19.1



Manso Amenfi 24.1



Manya-Kpongungor Mails 24.2

**MARKET CIRCLE TAKORADI / M.C. TAKORADI / TAKORADI MARKET CIRCLE**

MC TAKORADI RDC 24 24.2 2002 2003 not previously illustrated

**MEPOM**

MEPOM MAILS 24 24.1 2001

**MINISTRY B O ACCRA**

MINISTRY B.O. ACCRA 24 24.4 1999

**MPASAASO No 2**

MPAS(AASO No 2) 19 19.1 (1978) incomplete strike



MC Takoradi RDC 24.2



Mepom Mails 24.1



Ministry B.O. Accra 24.4



Mpasaaso No 2 19.1

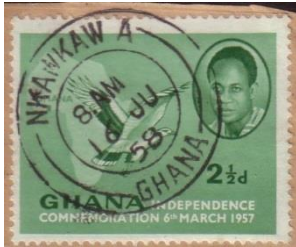
**NKAWKAW**

NKAWKAW A 20 20.1 1957 (1982)

possibly two devices, one with outer rim break above 2<sup>nd</sup> KA by Feb 1958, but most strikes have weakness at 3pm

NKAWKAW 3 21\* 21.3 1977 \* points to 2<sup>nd</sup> K, c.f. W in 21.1

NKAWKAW 24 24.1 1992 2003 not previously illustrated



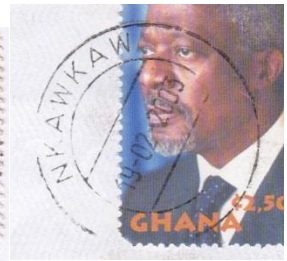
Nkawkaw 20.1 intact rim above 2<sup>nd</sup> KA



rim break above 2<sup>nd</sup> KA



Nkawkaw 21.3



Nkawkaw 24.1

**NKORANZA**

NKORANZA REGISTRATION 24 24.3 1997

**NKWABEN**

NKWABEN 24 24.1 2002 in violet, not previously illustrated

**NSOATRE**

NSOATRE POST OFFICE 12c 12.1 (1984)



Nkoranza Registration 24.3



Nkwaben 24.1



Nsoatre Post Office 12.1

**NTUNKUMSO**

NTUNKUMSO 19 19.1 1962 1964

**OBOGU**

OBOGU MAILS 24 24.1 1993 not previously illustrated



Ntunkumso 19.1



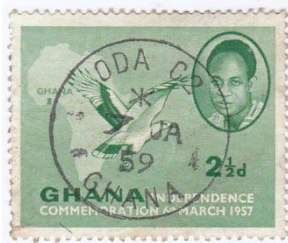
Obogu Mails 24.1

**ODA**

ODA C2 21\* 21.4 1959 close C2, no dot after C  
 ODA COUNTER 24 24.3 1991

**ODORKOR**

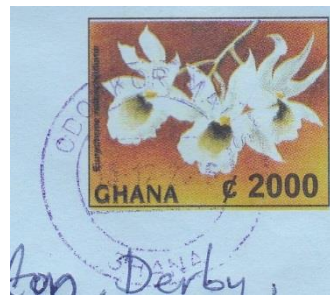
ODORKOR MAILS 24 24.1 (1998) 2006 2006 in violet, not previously illustrated



Oda C2 21.4



Oda Counter 24.3



Odorkor Mails 24.1

**ODUMASE KROBO**

ODUMASE KROBO 24 24.1 1989 not previously illustrated

**ODUMASI ASHANTI**

ODUMASI ASH MAILS 24 24.1 2004

**OFOMAN**

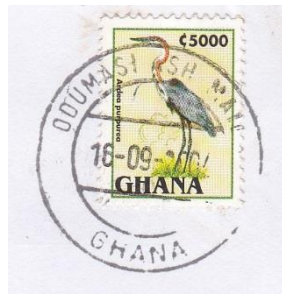
OFOMAN 21\* 21.1 1964 proofed Dec.1960, use now seen

**OLD TAFO**

OLD TAFO MAILS 24 24.1 2000 not previously illustrated



Odumase Krobo 24.1



Odumasi Ash Mails 24.1



Ofoman 21.1



Old Tafo Mails 24.1

**OSU**

OSU COUNTER 24 24.9 1989

OSU RAC 30 30.1 2006

Parren, receiving mark

**PAGA**

PAGA 24 24.1 2005

**PRAMPRAM**

PRAMPRAM 24 24.1 1999 2002 not previously illustrated

PRAMPRAM MAILS 24 24.2 2004



Osu Counter 24.9



Osu RAC 30.1



Paga 24.1



PramPram 24.1



Prampram Mails 24.2

## PRESTEA

PRESTEA MAILS 24 24.2 1998 2002 not previously illustrated

## SALAGA

SALAGA 24 24.1 2000 2001 not previously illustrated

## SALTPOND

SALTPOND P 21\* 21.6 1961  
 SALTPOND 24 24.1 2001 not previously illustrated



Prestea Mails 24.2



Salaga 24.1



Saltpond P 21.6



Saltpond 24.1

## SAMREBOI

SAMREBOI PMR 24 24.1 2001 2004 better illustration now available

## SEKODUMASI / SEKODUMASE

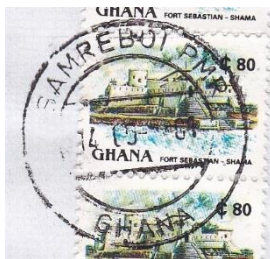
SEKODUMASE 24 24.1 2003 not previously illustrated

## SENCHI / SENCHI FERRY

SENCHI COUNTER 19 19.1 1959

## SOGAKOFE / SOGAKOPE

SOGAKOPE PMR 24 24.3 2008



Samreboi Pmr 24.1



Sekodumase 24.1



Senchi Counter 19.1



Sogakope Pmr 24.3

## SOVIE DZIGBE / SOVIE

SOVIE 19 19.1 1968

## SUHUM

SUHUM MAILS 2 24 24.2 1997

## SUNYANI

SUNYANI MAILS 24 24.2 1998 in red  
 SUNYANI RDC 24 24.8 1993



Sovie 19.1



Suhum Mails 2 24.2



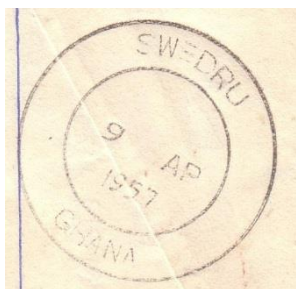
Sunyani 24.2



Sunyani 24.8

## SWEDRU

SWEDRU 19 19.1 1957 two devices  
 19.2 1960 small letters of GHANA  
 SWEDRU R.E. 1 21\* 21.6 1998 large letters of GHANA  
 SWEDRU PARCELS 24 24.3 1998 no year slug



19.1



19.2



21.6



24.8

## TAKORADI

TAKORADI P 21\* 21.18 1961

## TAMALE

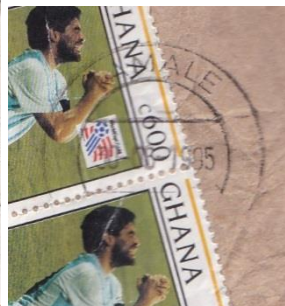
TAMALE	20		1957	1976	three types:
T - E 12.3mm, TA closely spaced		20.3	1957	1967	wide H in GHANA
T - E 13mm, TA wider spaced		20.4	1957	1961	wide H in GHANA
T - E 13mm, TA closely spaced		20.5	1972	1976	narrow H in GHANA
TAMALE	24	24.7	1995	2000	
TAMALE POC	24	24.8	1992	1999	



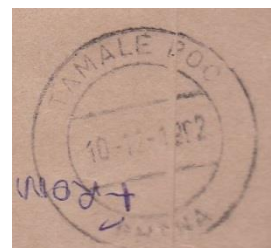
Takoradi P 21.18



Tamale 20.5



Tamale 24.7



Tamale POC 24.8

## TEASE

TEASE 24 24.1 1993 not previously illustrated

## TEMA

TEMA BILLS 27 27.2 1990

## TEMA COM. 1

TEMA C1 / REGISTRATION 30i 30.4 2000



Tease 24.1



Tema Bills 27.2



Tema C1 / Registration 30.4

## TEMA COMM 7

TEMA C7 MAILS 27 27.1 (1988)



Tema C7 Mails 27.1



enlargement of C7 portion

**TEMA COM 11**

**TEMA COMM ELEVEN MAILS**                      19            19.1            (1992)



Tema Comm Eleven Mails 19.1

**TEMA SHOPPING CENTRE**

TEMA SHOPPING CENTRE                      24            24.1            2002            not previously illustrated

**TESHI / TESHIE**

**TESHIE PMR**    24            24.2            1998

**TESHIE-NUNGUA ESTATE**

TESHIE NUNGUA EST MAILS                      24            24.5                                      may not exist, illustration is 24.6  
 TESHIE-NUNGUA EST MAILS 2                      24            24.6            2000            2001



Tema Shopping Centre 24.1



Teshie Pmr 24.2



Teshie-Nungua Est Mails 2 24.6

**WEIJAH**

**WEIJA .....**    30            30.3            2008            apparently no H at end of Weija

**WIAWSO**

**WIAWSO POC**    24            24.4            2005



Weija..... 30.3



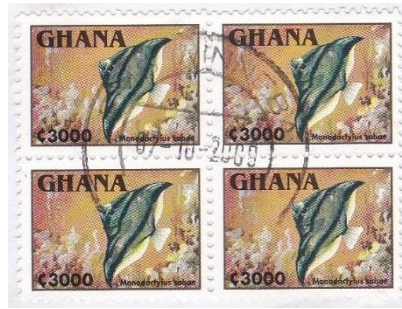
Wiawso POC 24.4

**WINNEBA**

WINNEBA C 21\* 21.6 1959  
 EMS WINNEBA 24 24.3 2009



Winneba C 21.6



EMS Winneba 24.3

**WORASO**

WORASO 19 19.1 1962 1963

**WORAWORA**

WORAWORA PMR 24 24.1 2003 not previously illustrated  
 WORAWORA 24 24.2 2004 2005



Woraso 19.1



Worawora Pmr 24.1

**31<sup>ST</sup> DEC. MAKOLA MKT**

31ST DEC. MAKOLA MKT MAILS 2 24 24.3 1999 not previously illustrated



Worawora 24.2



31<sup>st</sup> Dec.... 24.3 two images of same strike, 2nd with contrast enhanced

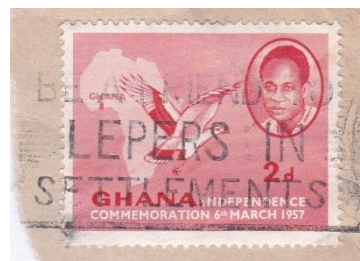
**MACHINE DIES and SLOGANS**



Accra without Ghana at base (Proud type M2).



Five wavy lines, GOLD COAST excised from centre, offset cds Sekondi, Ghana. Original form listed by Proud for Sekondi as M2 State 1.



BE A FRIEND TO / LEPERS IN / SETTLEMENTS

The wording of the slogan listed as: (COME T)O GHANA / NATIONAL / (TRADE) FAIR / (FEBRU)RY 1971. is amended to: **SECOND GHANA / INTERNATIONAL / TRADE FAIR / FEBRUARY 1971.**



## Date Extensions, Type Corrections, Additional Notes, etc

New information is shown in red.

ABAKRAMPA	21*	21.1	1957	(1977)	
ABETIFI MAILS	19	19.1	1973	(1976)	
ABISUA STREET FOSO	21*	21.1	1957	(1975)	
ABOKOBI	21*	21.1	1958	1982	
ABOMPE	19	19.1	1964	(1979)	
ABOR	24	24.1	1996	2001	by 1997 has broken top line of bridge
ABOSO	24	24.1	<del>1997</del>		may not exist; reported strike is a misread of ABOR 24.1
ABOSO C2	21*	21.2	1959	197-	
ABUAKWA ASHANTI	24	24.1	1996	2006	
ABUTIA KLOE	19	19.1	1964	1965	
ACCRA (larger letters of GHANA)	19	19.6	1967	1969	
ACCRA CENTRAL (CENRAL, CENTRL)	19	19.8	1977		two types: large + small GHANA
ACCRA MAILS also AC (inv.) CRA MI	19	19.9	1974	1980	two types: large + small GHANA
ACCRA	20	20.3	1969	1972	wide GHANA, arcs 14/15mm
ACCRA	20	20.4	1969	1972	wider GHANA, arcs 13/14mm
ACCRA	20	20.5	1975	1980	
ACCRA	21*	21.11	1957	1963	last A of GHANA angled left, wide *
ACCRA	21*	21.12	1959		similar to 21.11, narrower *, cto
ACCRA tall C's, widely spaced R - A	21*	21.13	1964	1976	not seen between 1964 and 1976
ACCRA.C.3	21*	21.26	1958	1972	
COUNTER SUPT. ACCRA	21*	21.62	1958	1970	1958 P.M. visit fdc
R.D.C. 3. ACCRA	21*	21.73	1970	1974	proofed Feb. 1958
ACCRA CENTRAL AIR	24	24.1	1990	2007	
ACCRA CENTRAL MAILS 5	24	24.5	2002	2005	
ACCRA EXPRESS DELIVERY	24	24.23	2002	2006	
ACCRA RAC	24	24.41	1997	2003	
ACCRA RE AIR	24	24.47	1990	1993	
KOTOKA AIRPORT ACCRA	19	19.2	1970	1972	listed under Accra Airport
KOTOKA AIRPORT / ACCRA A1	20	20.2	1977	1985	mostly cto usage, Accra A1 at base
KOTOKA AIRPORT / ACCRA A2	20	20.3	1971	1981	Accra A2 at base
KOTOKA AIRPORT M.O.& S.B.	21	21.3	1976	(1981)	type 21, not 21*
ACCRA NORTH R.C. 1	21*	21.4	1978	1982	
O/C ENCLOSURE ACCRA N.	21*	21.9	1977	1988	
ACCRA NORTH ENQUIRIES 2	24	24.5	1992	1993	
ACCRA NORTH RE	24	24.25	1992	2003	
ACCRA NEWTOWN	19	19.1	1961	1969	
ACCRA NEW TOWN	21*	21.1	1973	(1987)	
ACCRA NEWTOWN PMR	24	24.3	1991	2004	
ACHIASI A	20	20.1	1957	(1978)	
ACHIASI C	21*	21.2	1958	1960	
ACHIMOTA	21*	21.1	1957	1977	wide GHANA 10 mm
	21*	21.3	1959	(1985)	narrow GHANA 8 mm
ACHIMOTA MAILS	24	24.2	1998	2005	
ADAMASU	19	19.1	1960	1961	
ADAMASU	21*	21.1	1961	(1985)	proofed Dec. 1960, no *
ADANSI ANHWIASO	21*	21.1	1958	(1968)	
ADIDOME	21*	21.1	1957	1985	
ADIDOME	24	24.1	1999	2004	

ADIEMBRA . AHANTA	21*	21.2	1960	1980	proofed Jan. 1960
ADINA 'C'	21*	21.1	1958	1979	
ADISADEL MAILS	24	24.1	1991	2006	
ADWAFO	23	23.1	196-		proofed Mar. 1962, on 2d Volta River
AFIDWASE MAILS	24	24.1	1991	(2009)	
AFIDWASE TELS	24	24.3	2004	2005	
AFLAO MAILS	24	24.1	1990	(2006)	(2006) in violet
AFRANSI	21*	21.1	1957	(1982)	
AGBOSOME 'C'	21*	21.1	1957	1978	
AGOGO	19	19.1	1968	1980	also AGOG
AGONA ASHANTI	21*	21.1	1958	1979	
AGONA ASHANTI 'C'	21a	21.2	1980	1981	
AHENSAN	24	24.1	1995	1998	
AIYINASI	21(*)	21.1	1957	1976	* 57-Mar 58; no * Nov 58-
AIYINASI PMR	24	24.2	2002	2004	
AKATSI	19	19.1	1959	1961	
AKATSI	24	24.1	1991	2010	2010 in violet
AKIM BANSO	21*	21.1	1959	1964	
AKIM MANSO	24	24.1	2000	2006	
AKIM SWEDRU C	21*	21.1	1958	1966	
AKONTANMU	21*	21.1	1958	1966	
AKORABU KUKUA	21*	21.1	1957	1977	
AKOASI	21*	21.1	1957	(1979)	
AKOSOMBO A	20	20.1	1977		wide Akosombo
AKOSOMBO	21*	21.1	1973	(1992)	
AKOSOMBO MOC	24	24.1	2000	2007	
AKRADE MAILS	24	24.1	1996	200-	
AKRODIE	21*	21.1	1961	(1982)	pr. 12/60 no *
AKROPONG WASSAW	21*	21.1	1958	1974	
AKROPONG WASSAW 'T'	21*	21.3	(1982)	1985	
AKUSE A	20	20.1	1957	1976	
AKUSE	21*	21.2	1963	1984	clear *, N points to K
AKUTUASE	19	19.1	1961	1969	
AKWATIA A	20	20.1	1957	(1979)	
AMANASI	20	20.1	1958	1969	
AMANTEM NKWANTA	21*	21.1	1957	(1984)	
AMEDJOFE 'C'	21*	21.1	1958	(1973)	
ANFOEGA	19	19.1	1957		
ANKAASE	19	19.1	(1967)		strike on 3Np mudfish
ANLOGA	24	24.1	1993	2003	
ANLOGA MAILS KSI	19	19.1	(1988)	(1992)	
ANLOGA-KUMASI MAILS	24	24.1	1996	2002	24.1 and 24.2 are the same postmark
ANOMABU C	12c	12.1	1988		was 27.1, misidentified as type 27
ANOMABU C	21*	21.1	1959	1963	
ANOMABU MAILS	24	24.1	2001	2006	

ANYAKO 'C'	21*	21.1	1958	1970	
APAPAM	21*	21.1	1958	1968	
REGISTERED / APESOKUBI	23	23.1	1965	1981	
ASAMANKESE MAILS	24	24.2	1996	(2006)	larger lettering
ASANKRAN BREMAN	21*	21.1	1960	1981	proofed Dec. 1959
ASANWINSO	21*	21.1	1957	1970	
ASIKASU NO 1	19	19.1	(2003)		on c2000 Kofi Annan, SG3356
BREMAN ESIKUMA C.4.	21*	21.3	1970	1978	listed under Asikuma
ASIN AKONFUDI	21*	21.1	1958	1975	
ASOKORE	21*	21.1	1958	(1982)	
ASSEN KWAMENATA	21*	21.1	1961	1979	proofed Dec. 1959
ASUOKAW	21*	21.1	1957	(1982)	
ASUOM MAILS	24	24.1	2000		
AVE-AFIADENYIGBA 'C'	21*	21.1	1958	1978	
AVEME BEME C.	21*	21.1	1962	1976	
AWASO C.4	21*	21.2	1960	1968	proofed Dec. 1959, no *
AXIM MAILS	24	24.1	1993	2008	
BAGLO 'C'	21*	21.1	1958	1975	
<del>BAIKA GBI</del>	<del>19</del>	<del>19.1</del>	<del>1960</del>		most probably Baika Gbohome
BANSO	21*	21.1	1958	(1967)	
BAREKESE	19	19.1	1962	(1976)	Barekes 1962/5, final E omitted.
BATOR	21*	21.1	1959	1968	
BAWKU M.O. & S.B.	21*	21.2	1970	(1982)	
BECHEM	20	20.1	1958	(1982)	also possible Dec. 1957, no yr slug
BECHEM	21*	21.1	1958	1978	
BEDUM	21*	21.1	1958	(1984)	
BEGORO	21*	21.1	1958	1982	
BEKWAI	20	20.1	1958	1985	
BENCHEMA	21*	21.1	1958	(1974)	
BEPON	21*	21.2	1958	(1978)	was thought proofed Feb. 1959, no *, but */10 Oct 1958 strike looks identical; proof strike may be out of sequence in compiled Impression Books
C BEREUM (Berekum)	19	19.3	1981	(1984)	C BERE M (1984)
BEYIN	21*	21.1	1957	1977	
BIBIANI	24	24.1	2006	2010	
BIMBILA	24	24.1	2002	2006	
BIRIM ROAD . ODA	21*	21.1	1957	1973	
BOAKO	21*	21.1	1960	1973	
BODI	21*	21.1	1958	1976	
BOGOSO MAILS	24	24.1	2002	2004	
BOLGATANGA	20		1957	1979	two types:
		20.1	1957	1960	arcs 13mm
BOLGATANGA MAILS 2	24	24.3	1992	2005	also in red between 2000 and 2005
BOLGATANGA RE	24	24.4	1994	2005	in red 2005

BOMA	21*	21.1	1958	(1980)	
BOMPATA	20	20.1	1958	(1976)	
<del>BONGO POST OFFICE</del>	<del>24</del>	<del>24.1</del>	<del>2000</del>		this was 30.1 misclassified
BONWIRE	21*	21.1	1958	1976	
BUMBULA 'C'	21*	21.1	1959	(1978)	
CANTONMENT	24	24.1	1991	2007	
CANTONMENT MAILS 2	24	24.3	1993	2000	
CANTONMENT REGISTRATION	24	24.5	1997	2001	
<del>REGISTERED CAPE COAST</del>	<del>21*</del>	<del>21.12</del>	<del>1958</del>		misread of Beula Road Cape Coast 21.1
RAC CAPE COAST	19	19.6	1970	1971	various letter spacings
CAPE COAST MAILS	24	24.1	1990	2006	long break in upper bridge line by 1999
CASTLE P O ACCRA	19	19.1	1973	1980	at least two spacings
CHRISTIANSBORG	20	20.1	1957	(1984)	
COLLEGE OF TECHNOLOGY KUMASI	21*	21.1	1957	1962	
UST KUMASI	24	24.5	1995	2009	2006/8/9 years shown as 006/008/009
U.P.O. KS D	27	27.2	1989	1994	
DADEESOABA	21*	21.1	1962	1969	proofed Dec. 1960, no *
DAMANGO	24	24.1	1998	2007	
DANSOMAN ESTATE / "C" GHANA	21a	21.1	1985	1988	
DANSOMAN "EST" MAILS	24	24.2	1993	2003	
DARKUMAN MAILS	24	24.2	1993	1999	
DIASO	21*	21.1	1957	1971	
DIXCOVE	21*	21.1	1957	1979	
DODI PAPASE MAILS	20	20.1	1961	(1983)	proofed Jan. 1960
DOMIABRA	21*	21.1	1958	1985	
DOMPOASE	19	19.1	1958	1959	
DORMAA AHENKRO MAILS	24	24.2	1995	2003	
DUNKWA C4	21*	21.3	1960		type 21*, not 21
DUNKWA MAILS	24	24.1	1991	2005	2005 in violet
DUNKWA RDC	24	24.3	1995	2003	
<del>DUNKWA RDO</del>	<del>24</del>	<del>24.4</del>	<del>1995</del>	<del>2003</del>	misread of Dunkwa RDC 24.3
DWENEM	21*	21.1	1958	1978	
DWOMO	21*	21.1	1958	1982	delete ref. to no * 1982
DZODZE 'C'	21*	21.1	1957	1964	listed under Dsoje
DZAKE 'C'	21*	21.1	1959	1978	
EDU RIDGE TAMALE	24	24.1	1995	2004	
EDWESO BESEASE	19	19.1	1963	(1976)	
EFFIAKUMA	23	23.1	1961	1988	proofed Mar. 1961
EFFIAKUMA MAILS	24	24.2	1993	2003	also in purple
EFIDUASI MAIL OFFICE	20	20.2	196-	1979	
EKWAMKROM	21*	21.1	1958	1977	
ELMINA MAILS	24	24.1	1990	2003	
ENYANMEM	21*	21.1	1957	1975	
ENYAN NKODWO	19	19.1	1968	1970	
ENYIRESI	21*	21.1	1958	1974	
ESAASE	21*	21.1	1958	1964	

ESIAM A	20	20.1	1957	1976	
ESSIKADU	21*	21.1	1958	1965	
ESSUOWIN	21*	21.1	1958	1974	
EXAMS COUNCIL PO A	19	19.1	1979	1985	
FANTI NEWTOWN	21(*)	21.1	1958	1985	* 1958, no * 1960 onwards
FANTI NEW TOWN MAILS	24	24.1	1993	2003	
FAWOHOYEDEN	19	19.1	1960	1976	
FLAGSTAFF HOUSE C	21*	21.1	1965		no ' ' around C
FOMENA	21*	21.1	1958	1985	
FUMSO	19	19.1	1974	(1979)	
GBI BLA C	19	19.1	1958	1960	
GBI BLA C	21*	21.1	1960	(1974)	
ANKAMU MAILS	24	24.1	1996	2012	listed under Gomoa Annkamu
GOMOA ESHIEM	21*	21.1	1958	(1983)	
BURMA CAMP A	23	23.2	1963	(1983)	P points to left of H
BURMA CAMP C	23	23.4	1963	1982	in violet Nov 1982
BURMA CAMP C4	23	23.5	1961		all three listed under Giffard Camp
FOMENA	21*	1958	1985		
GOASO	19	19.1	1969	(1973)	
GYANKUFA	21*	21.1	1962	(1967)	
REGISTERED . HO	21*	21.1	1957	(1983)	
HO	24	24.1	1993	2006	
HO MAILS	24	24.3	1991	2012	
HO MOC	24	24.6	1999	2006	
HO R.A.C.	24	24.7	1995	2003	
HOHOE TELEGRAPHS	21*	21.3	1958	1974	
REGISTERED HOHOE	21*	21.4	1958	1993	no year slug 1993
INSU A	20	20.1	1959	(1979)	
INSU T	21*	21.3	1958	1959	
JABESO	21*	21.1	1958	1975	
JABESO	24	24.1	1999	2002	showing 1900 for 2000
JAKOBU	21*	21.2	1960	1972	
JAMASI	21*	21.1	1958	1982	
KADJEBI 'C'	21*	21.1	1957	1977	
KANESHIE	24	24.1	1994	2003	
KEJETIA REGISTRATION	24	24.3	1996	2000	
KETA 'C'	21*	21.1	1959	(1978)	
KETAN. A	20	20.1	1961	198-	proofed Jan. 1960, dot not always clear
KETAN	21*	21.1	1957	(1982)	K - N 11mm, Ghana NA close
KOFORIDUA A	20	20.1	1958	1963	line from I touches N of Ghana
REGISTERED . KOFORIDUA	21*	21.6	1965	(1977)	wider D-K gap, 4 mm
KONONGO	21*	21.1	1977	1978	
KPANDO FESI	21C	21.2	1959	1966	proofed Feb. 1958
KPANDU PARCELS	21*	21.2	1967	(1986)	
KUMASI.REGISTERED F	21*	21.10	1959	1960	proofed Mar. 1958
KWANYAKU A	20	20.1	1957	1968	

KWAHU JEJETI	19	19.1	(1982)		listed under Jejeti
JUAPONG	19	19.1	1973	1980	
JUASO	21*	21.1	1957	(1982)	
JUASO COUNTER	24	24.2	2004	2007	
JUASO MAILS	24	24.3	1995	1999	
KADJEBI A	20	20.1	1958	1982	
KANESHI	19	19.1	1971	1973	
KANESHI A	23	23.1	1961	1970	
KANESHIE PARCELS	24	24.4	1997	2007	
KANESHIE RE	24	24.6	1999	2005	
KETEKRACHI MAILS	24	24.1	1996	2007	
KIBI	21*	21.1	1958	1977	
KIKAM	21*	21.1	1958	1985	* 1958-77, no * 1985
KINTAMPO	24	24.1	2000	2002	
KOFORIDUA A	20	20.2	1957	(1982)	
		20.3	1959	1975	
REGISTERED . KOFORIDUA	21*		1957	1980	
		21.5	1957	1980	not seen between 1964 and 1980
		21.6	1964	1976	
REGISTERED / KOFORIDUA	23	23.1	(1977)	1981	
KOFORIDUA MAILS 3	24	24.3	2002	2006	
KOFORIDUA RE	24	24.6	2002	(2009)	
KOJOKROM	24	24.1	1996	2002	
KOKOFU	21*	21.1	1958	1974	
KOLOENU 'C'	21*	21.1	1958	(1978)	
KONONGO	20	20.1	1957	1982	
KONONGO	21*	21.1	1976	1978	
KONONGO PARCELS	24	24.1	1997	2004	
KORLE BU	23	23.2	1966	1977	L – E 4.5mm, with time
KOTOKURABA PO & MOC	24	24.2	2006	2009	
KPANDU A	20	20.1	1957	1976	
KPONG	21*	21.1	1958	1970	
KPANDO FESI	21C	21.2	1962	1966	
EMS KUKURANTUMI	24	24.1	2002	2006	
KUMASI	20		1957	1985	at least 3 very similar: 20.2 violet 1976
line from I touches H		20.3	1958	1968	outer circle break(s) left of K Mar58-
KUMASI R.L.O.	21	21.14	1965	1972	Returned Letter Office, prfd. Nov. 1959
KUMASI Y	21*	21.16	1959	1968	Y sometimes appears as V
PARCEL DELIVERY 3 / KUMASI .	21*	21.23	1958	1987	proofed Feb. 1958
KUMASI MAILS 'C'	24	24.12	1999	2009	
KUMASI MAILS 'D'	24	24.13	2006	2010	
KUMASI MAILS 'E'	24	24.14	1993	(2001)	
KUMASI RAC	24	24.20	1990	1993	
KUMASI / M/C OPENING	30k	30.1	2000	2001	
KUMAWU MAILS	24	24.1	1989	2004	
KUMAWU PEPEASE	19	19.1	1964	(1968)	
KUNTANASI	21	21.1	1958	1959	type 21, not 21*
KUSAWGU / NORTHERN GHANA	22*	22.1	1959	1978	
KWABEN A	19	19.2	1961	1968	

KWADASO	19	19.1	1960	1968	
KWADASO ACADEMY	19	19.1	196-	1975	
KWAHU ADOWSO	19	19.1	1960	1961	
KWAWU ADOWSO	19	19.2	1961	1973	
LABADI	21*	21.1	1957	1972	narrow *
		21.2	1959	1978	wide *
LAGOON ROAD . SEKONDI	21*	21.1	1957	1984	
LAGOON RD. SC	24	24.1	1996	2005	SC = Sekondi
LAGOON RD. SC PMR	24	24.3	1999	2004	
LAWRA	21*	21.1	1958	1979	
LAWRA	24	24.1	1993	2010	also in red 1999, 2000, 2004, 2010
UNIVERSITY P.O. LEGON / ACCRA	20	20.1	1958	1977	listed under Legon
UNIVERSITY P.O. LEGON / ACCRA	21*	21.1	1959	1976	2mm between P.O. and Legon
E.M.S. LEGON 2	24	24.2	2000	2001	years shown as 000, 001
LEGON MAILS 2	24	24.6	1990	1998	
LIKPE BAKUA 'C'	21*	21.1	1959	(1977)	
LIKPE MATE 'C'	21*	21.1	1957	1980	
MEDINA	19	19.1	1967	1985	listed under Madina
MADINA MAILS	27	27.1	1985	1988	
MAFI KUMASE	19	19.1	1961	(1982)	
MALLAM	24	24.1	1993	2003	
MAMFE BILLS	24	24.1	1996	2007	
MAMPONG ASHANTI	20	20.1	1958	(1982)	
MAMPONG ASHANTI	21*	21.1	1958	1977	
MAMPONG ASHANTI PARCELS	21*	21.2	1973	1978	
MAMPONG ASH MAILS	24	24.1	1991	2006	
MAMPROBI	21(*)	21.1	1958	1985	no * 79-85
MAMPROBI MAILS 6	24	24.6	1996	(2002)	
MAMPROBI MAILS 9	24	24.9	1999	2009	
MANDO	21*	21.1	1958	1967	
MANGOASE	21*	21.1	1979	1981	
MANKESSIM 'C'	21a	21.2	1978	1985	
MANSO NKWANTA	21*	21.1	1959	(1974)	
MANYA KPONGUN R	19	19.1			renumber from 19.2
MKT. AVENUE SW	24	24.1	1996	2004	SW = Swedru
MARKET CIRCLE TAKORADI A	20	20.1	1957	1976	
TAKORADI MC 'RE'	24	24.8	1990	1993	
MEDINA	19	19.1	1967	1983	listed under Madina
MEPE	19	19.1	1957		this may be the Gold Coast type 19
MEPOM	21*	21.1	1957	1980	
MIM-AHAFO	21*	21.1	1957	1985	
MINISTRY B.O. ACCRA	21*	21.1	1959	1973	proofed Nov. 1958
MINISTRY B.O. ACCRA . C	21"2"	21.4	1964	1965	proofed Dec. 1959 with 2 code
MINISTRY B.O. MAILS	24	24.3	1990	2006	
MBO ACCRA T	27	27.1	1986	1988	
MOKWAA	19	19.1	1963	1965	
MPOHO	21*	21.1	1957	1979	
NAKPANDURI	19	19.1	1964	1972	

NAKWA	21*	21.1	196-	(1982)	196- on 2d Volta river, prfd. Dec. 1959
NANKASI	21*	21.1	1958	1973	
NAVRONGO	23	23.1	1962	1981	
NEW AYOMA 'C'	21*	21.1	1958	1964	
NGULOFOLU	21*	21.1	1958	(1965)	became Nkroful
NIGO	24	24.1	1993	2008	in violet 2008
NIMA MAILS	19	19.1	1985	1988	
NKASEEM	21*	21.1	1958	1982	
NKAWKAW A	20	20.1	1958	(1987)	
NKAWKAW	21*	21.1	1969	1985	1967 "ERD" was misread of Nsawkaw
NKWANTA MAILS	24	24.2	1995	2001	
NKYERAA	21*	21.1	1957	1961	
NSABA A	20	20.1	1958	1979	
NSAWAM	21*	21.1	1969		asymmetry, number excised after Nsawam? but closer lettering than 21.3
REGISTERED NSAWAM	21*	21.4	1957	1977	initially wide *, 64-77 narrower *
NSAWKAW	21*	21.1	1960	1967	
NSUTA WASSAW C	21*	21.1	1962	1978	
NTRONANG	21*	21.1	1957	(1980)	
NUNGUA MAILS	24	24.1	1991	2008	
NYAKROM	21*	21.1	1960	(1982)	proofed Dec. 1959, no *
NYARKROM MAILS	24	24.2	1996	2011	
NYENASI	21*	21.1	1958	1975	
OBAWALE	21*	21.1	1958	1969	in violet June 1961
OBO	21*	21.1	1958	1985	
OBUASI MAILS	24	24.2	1993	2010	
ODUMASE KROBO	19	19.1	1961	1968	missing K 1968
OJUBI	24	24.1	2000	2007	
OKAGYAKROM 'C'	21*	21.1	1958	(1973)	
OMANPE	21*	21.1	1958	1975	
ONWE	21*	21.1	1958	(1982)	
OPONSO	21*	21.1	1958	1971	
OSEEM	21*	21.1	1958	1968	
OSU MAILS	24	24.1	1993	2007	
OSU MAILS 5	24	24.5	1996	2006	
OTUMI	21*	21.1	1959	1964	
OYOKO ASANTE	21*	21.1	1958	(1983)	
PARLIAMENT HOUSE P.O. / ACCRA.	21(*)	21.2	1959	(1982)	pr. Aug. 1959, Accra.Ghana at base CTO no * 1959-60, * 1960-(82)
PARLIAMENT HOUSE COUNTER	24	24.1	1991	1997	
PRANG	20	20.1	1957	1975	
PRANG	21*	21.1	1958	1975	
PRESTEA C2	21*	21.1	1959		type 21*, not 21
PUSIGA	23	23.1	1963	1975	proofed Jul. 1962
SABOBA	21*	21.1	1957	1969	

SAKUMONO MAILS	24	24.1	1995	2003	also reported as Akumono Mails
SALTPOND C4	21*	21.3	1958	1976	
SALTPOND MAILS	24	24.2	1993	2008	
SAMPA	24	24.1	1993	2008	in red 2002
SANDEMA	24	24.1	1996	2007	
SAWIA	21*	21.1	1958	1966	
SAWLA	23	23.1	1962	1983	
SEGE	21*	21.1	1958	1971	proofed Feb. 1958
SEKONDI	U1	U1.1	1959	1968	
SENCHI FERRY	21	21.1	1964	1971	
SHAMA	24	24.1	1999	2006	
SOGAKOFE	21*		1957	1975	two types:
		21.1	1957	1970	wide GHANA
		21.2	1959	1975	proofed Nov. 1958, narrow GHANA
SOGAKOFE A	23	23.1	1961	1975	1971-75 no time slug
SOGAKOPE	24	24.1	2001	2004	
SOGAKOPE REGISTRATION	24	24.2	1995	2001	
SOKODE	19	19.1	1963	1968	
<del>SOMANYA</del>	<del>20</del>	<del>20.1</del>	<del>1958</del>		misread of Suhum A
SOMANYA REGISTRATION	24	24.3	1997	2006	2006 in violet
SOVIE	21*	21.2	1979	1980	
STATE HOUSE MAILS	24	24.2	1989	2000	
SUHUM A	20	20.1	1957	1985	
SUHUM MAILS	24	24.1	1991	2011	
SUMINAKESE	21*	21.1	1959	(1980)	proofed Nov. 1958
SUNYANI REGISTERED	21*	21.3	1960	1985	
<del>TAFO A</del>	<del>20</del>	<del>20.2</del>	<del>1959</del>	<del>1964</del>	20.1 and 20.2 are the same; all have
TAFO A	20	20.1	1958	(1982)	damage to inner circle just left of T
TAIFA MAILS	24	24.1	1999	2000	
TAKORADI	U1	U1.1	1957	1970	cds used as handstamp 4 Apr 1957
TAKORADI A	20	20.1	1957	1970	
TAKORADI WHARF C	21*	21.1	1957	(1985)	
TAMALE	19	19.1	1968	1969	large letters TAMALE
TAMALE * 1959-60, no * 1979	21(*)	21.1	1959	1980	proofed Jun. 1958 with *
TAMALE R.E.1	23	23.2	1966	1978	proofed Jul. 1962
TAMALE R.E.2	23	23.3	1965	1977	proofed Jul. 1962
TANOSO TECHIMAN	19	19.1	1961	(1984)	
TAPA AMANYA 'C'	21*	21.1	1958	1967	
TARKWA A2	21*	21.1	(1960)	1985	proofed Jan. 1960, CTO use 1960
TARKWA C.	21*	21.2	1961	1965	proofed Jan. 1960, often CTO use
TECHIMAN	20	20.2	1966	(1985)	
TELEKU BOKAZO	21*	21.1	1958	1962	
TEMA A	23	23.1	1963	1975	
TEMA MAILS 4	24	24.4	1993	2003	
TEMA COMMUNITY NO 2	19	19.1	1965	1976	also COMMUNNITYO2
TEMA C2 MAILS	24	24.2	1993	2006	
TEMA COMM 7.	19	19.1	1984		dot after 7
TEMA COMM 7. C 1	19	19.2	1973	(1981)	last character clear in 1975/8 strikes

TEMA JUNCTION	21*	21.1	1958	1973	also 23 Dec 1982, Xmas use?
TEMA NEWTOWN	19	19.1	1961	1981	also NEW TOWN
TEMA NEWTOWN MAILS	19	19.2	1975	1979	
TEMA NEWTOWN	24	24.1	2002	2010	
TEPA	20	20.1	1958	1984	
TEPA	21*	21.1	1957	1978	
TESHI T	23	23.3	1963	1985	proofed Mar. 1962
TESHIE MAILS	24	24.1	1991	2006	
TESHIE-NUNGUA ESTATE 'M'	24	24.4	1993	2006	
TIKOB0 NO 1	19	19.1	1963	(1975)	
TIKOB0 NO.1	24	24.1	2006		in violet
TRADE FAIR	19	19.1	1967	1970	
TSRUKPE TOTA 'C'	21*	21.1	1959	(1981)	
TUOBODOM	21*	21.1	1959	1976	
TUNA	21*	21.1	1957	(1973)	
TUMU	24	24.1	1996	2004	also in red and violet
TWIFO MAMPONG	21*	21.1	1961	1964	proofed Dec. 1959
TWIFU A	20	20.2	1968	1969	
UNIV P.O. CAPE COAST	19	19.1	1967	(1982)	also UNI P O
CAPE COAST UNIV. MAILS	24	24.1	2001	2014	2001 in red
VANE 'C'	21*	21.1	1958	1972	
WA	20	20.1	1957	(1983)	
WA	21*		1958	(1986)	two types:
wide H in GHANA		21.1	1958	(1986)	proofed Jun. 1958
narrow H in GHANA		21.2	1958	1981	
WA R.E.	23	23.1	1999	2003	both years m/s
WA PMR	24	24.4	1999	2002	2002 in red
WALEWALE	24	24.1	1999	2008	2008 in violet
WENCHI	19	19.1	1966	(1974)	
WENCHI	20	20.2	1967	(1984)	
WENCHI MAILS	24	24.1	1991	2002	also in red
EMS WIAWSO	24	24.1	2002	2010	2010 in violet
WIAWSO ASHANTI	21*	21.1	1959	1968	
WORAWORA 'C'	21*	21.1	1957	1974	
WURAKESE	21*	21.1	1960	(1983)	
WUTE C	21*	21.1	1962	(1976)	proofed Nov. 1960, no *
YAMORANSA	21*	21.1	1958	1969	
YEFRI	21*	21.1	1958	1964	
YEJI	20	20.1	1958	1968	
YENDI MAILS	24	24.3	1995	(2008)	

## Mobile Savings Bank Units

The registration label on a 1958 cover from Mobile S.B.6 includes KF, an abbreviation for Koforidua, indicating the area in which this facility operated.



The sender's address on a 1958 cover from Mobile Savings Bank No.7 is given as Pramkese, via Kade.

## Office Name Changes

Some minor spelling alterations are not included.

Abasa – Enyan Abaasa (1962)

Accra Airport – Kotoka Airport (1970) – K.I.A. (variants) (2000)

Adiembra – Adiembra Ahanta (1960)

Adiembra Foso – Asin Adiembra (1962), but using Adiembra Foso type 21\* cancel in 1982

Adwajiri – Adoagyiri (2001)

Aiyiribe – Ayirebi (1959)

Asikuma – Breman Esikuma (1969)

Asikuma Junction – Anum Asikuma (1962)

Awiam – Domaa Akwamu (1967)

Bekwai – Bekwai Ash(anti) (1993)

Christiansborg – Osu (1983)

College of Technology (Kumasi) – University PO Kumasi (1961) – UPO/UST (variants) (1989)

Domenasi (Saltpond) – Abeadze-Domenase (1960)

Dsoje – Dzodze (1957)

Esaase Kwahu – Kwahu Esaase (by 2000)

Fwidiem – Hwidiem (1971)

Giffard Camp – Burma Camp (1961)

Gomoa Annkamu – Ankamu (2000)

Have Etoe – Have (1958)

Jejeti – Kwahu Jejeti (1967)

Labadi – La (1996)

Legon – University PO Legon (1958) – Legon (1988)

Ngulofolo – Nkroful (1966)

Sokode Gbogame – Sokode (1963)

Sovie Dzigbe – Sovie (1968)

Tanoso Wenchi – Tanoso Techiman (1960)

Techiman Ashanti – Techiman (1957)

Tema Junction – Ashiaman (1975)

Wegbe – Wegbe Kpalime (1960)

Wenchi Ashanti – Wenchi (1966)

## GhanaPost Post Offices 13 July 2020

<https://ghanapost.com.gh/post-offices/>

**Total: 366**

### Greater Accra Region (71)

Abeka	General Post Office	Osu
Abokobi	Jamestown	Oyibi
Abossey Okai	Kanda	Prampram
Accra Newtown	Kaneshie	Sakumono
Accra North	Korle-Bu	Spintex
Achimota Market	Kotobabi	State House
Achimota School	Kwabinya	STC
Adabraka	La	Taifa
Ada Foah	Lartebiokorshie	Taifa North
Adenta	Legon	Tema Community 1
Airport	Madina	Tema Community 2
Alajo	Mallam	Tema Community 7
Amasaman	Mamprobi	Tema Community 11
Art Centre	Mile Seven	Tema New Town
Burma Camp	Ministries	Tema Shopping Centre
Cantonments	Nii Boi Man	Teshie
Castle	Nima	Teshie Nungua
Central University	North Kaneshie	Trade Fair
Dansoman Community	Nungua	TUC
Dansoman Estates	Nyanyano	Valco Flat
Darkuman	Odorkor	Valley View
Dawhenya	Oduman	Weija
Dodowa	Odupong Kpehe	31 <sup>st</sup> December Market
Exams Council	Ofankor	

Compared to the 2015 list, **Central University** (E of Dawhenya, S of Accra-Aflao road), **Dawhenya** (NE of Tema where road from Prampram meets Accra-Aflao road), **Nyanyano** (on coast S of Kasoa) and **Oyibi** (between Adenta and Dodowa) have been added. Odupong Kpehe (Kasoa) has been transferred from the Central Region list, while Airport Transshipment, Ashiaman, Big Ada and Madina Redco have been removed.

## Ashanti Region (67)

Aboabo (Container PO)	Bonwire	Manponten ( <i>sic</i> )
Agogo	Chirapatre (Container PO)	New Edubiase
Agona (Ashanti)	Donpoase ( <i>sic</i> )	New Tafo (Ashanti)
Ahensan	Dunkwa on Offin	Nkawie
Akrofuom	Effiduasi (Ash)	Nkenkasu
Akrokeri	Ejisu	Nsuta-Ash
Akropong Bekwai	Ejura	Nyinahin
Akropong Kumasi	Fanti New Town	Obuasi
Akumadan	Fomena	Odumasi
Anloga (Container PO)	Jachi	Offinso
Asafo	Jamasi (Ashanti)	Prempeh College
Asamang (Ashanti)	Juaben-Ashanti	Railways (Container PO)
Asawase	Juansa	Santasi
Ashanti New Town	Juaso	Sekyedumase
Ash Town	Kejetia	Sepe Apampinam
Asokore (Ash)	Kokofu	Sports Stadium (Kumasi)
Asuoyeboa	Konongo	Suame
Bantama	Kumasi GPO	Tafo Asante
Bekwai Ashanti	Kumawu	Tepa
Boamang	Kwadaso	University PO KNUST
Bohyen-Ampabame	Kwadaso Academy	Wiamoase (Ashanti)
Bomfa	Kwamang (Ashanti)	
Bompata	Mampong Ashanti	

Compared to the 2015 list, **Asafo** (Kumasi district, SE of Fanti Newtown), **Ash Town** (Kumasi district, E of Bantama) and **Donpoase** (Adansi North District digital address code, a probable reopening of previous Dompouse near Akrokeri) have been added. Dunkwa-on-Offin has been transferred from the Central Region list, although the town remains in the Central Region.

## Brong Ahafo Region (25)

Acherensua	Gyapekrom	Sampa
Atebubu	Hwidiem	Sunyani
Bechem	Jema	Techiman
Berekum	Kenyasi	Techimantia
Chiraa	Kintampo	Wamfie
Dormaa Ahenkro	Kukuom	Wenchi
Drobo	Mim Ahafo	Yeji
D/Nkwata ( <i>Duayaw Nkwanta</i> )	Nkoransa	
Goaso	Nsoatre	

Compared to the 2015 list, Prang has been removed.

## Eastern Region (60)

Abetifi	Asesewa	Mampong Akwapim
Aburi	Asiakwa	Mangoase
Achiase	Asokore (ER)	Manya Kpongonor
Adawso	Asuom	Mepom
Adeiso	Begoro	Mpraeso
Adoagyiri	Bosuso	New Abirem
Adukrom	Bunso	New Akrade
Afidwase (ER)	Charlie Junction	New Tafo (Eastern)
Apeguso	Donkokrom	Nkawkaw
Akim Manso	Jumapo	Nkwatia
Akim Swedru	Kade	Nsawam
Akosombo	Kibi	Obo
Akropong Akwapim	Koforidua	Oda
Akroso	Krabo Coaltar	Odumasi Krobo
Akuse	Kukurantumi	Old Tafo
Akwatia	Kwabeng	Osiem (Oseem)
Anum	Kwahu Praso	Osino
Anyinam	Kwahu Tafo	Oyoko
Apedwa	Larteh	Somanya
Asamankese	Mamfe	Suhum

Compared to the 2015 list, there are no changes.

## Western Region (41)

Aboso	Daboase	Market Circle
Agona Ahanta	Dwenase	Nkroful
Aiyinasi	Effiakuma	Nsuaem
Akropong Wassaw	Effia Nkwanta	Nsuta Wassaw
Apowa	Elubo	Prestea
Asankragwa	Enchi	Samreboi
Atieku ( <i>Ateiku</i> )	Esiam	Sefwi Bekwai
Awaso	Half Assini	Sefwi Wiawso
Axim	Huni Valley	Sekondi
Axim Road Takoradi	Juabeso	Shama
Beyin	Ketan (Container PO)	Takoradi
Bibiani	Kojokrom (Container PO)	Takoradi Poly
Bogoso	Kwesimintsim	Tarkwa
Bonyere	Lagoon Road	

Compared to the 2015 list, **Dwenase** has been added, with a digital address code placing it within Sefwi Wiawso Municipal District. Dwinase on maps, 1 mile N of (Sefwi) Wiawso, 6.22°N, 2.48°W. This cannot be the Dwenase listed in 1967 under Osino (Central Region). The type 31 postmark listed under Dwenase (Osino) from 2002-2004 may have been used at the Wiawso office.

## Central Region (26)

Abura Dunkwa	Cape Coast	Nyakrom
Adisadel	Elmina	Pinanko
Agona Duakwa	Kojo Beedu, Winneba	Regional Off. Block
Ajumako	Komenda	Saltpond
Anomabu	Kotokuraba	Swedru
Apam	Kwanyaku	Twifo Praso
Assin Fosu (Foso)	Mankessim	University (Cape Coast)
Bawjiase	Market Avenue / Swedru	Winneba
Breman Esikuma	Nsaba	

Compared to the 2015 list, **Regional Off. Block**, with a Cape Coast digital address code, has been added. Dunkwa-on-Offin has been transferred to the Ashanti Region list, Odupong Kpehe to the Greater Accra Region list. Ankamu, Bisease, Esiam, Goma Eshiem, Gomoa Odina, Kasoa, Odoben and Senya Bereku have been removed.

## Volta Region (35)

Abor	Dodi-Papase	Kpeve
Adidome	Dzodze	Mawuli
Aflao	Golokwati	Nkonya Ahenkro
Agbosome	Ho	Nkwanta
Agotime Kpetoe	Hohoe	Peki
Akatsi	Jasikan	Sogakofe
Amedzofe	Juapong	Stadium
Anfoega	Kadjebi	Tsito
Anloga	Keta	Vakpo
Apesokubi	Kete-Krachi	Vane
Dambai	Kpando	Worawora
Denu	Kpedze	

Compared to the 2015 list, **Stadium**, with a Ho digital address code, has been added.

## Northern Region (14)

Bimbilla	Gambaga	Tamale GPO
Bisco	Kpandai	UDS Tamale
Buipe	Nalerigu	Walewale
Damongo	Salaga	Yendi
Education Ridge	Savulugu	

Compared to the 2015 list, **Nalerigu**, with an East Mamprusi District digital address code (10.53°N, 0.37°W, 5 miles E of Gambaga) has been added. Bole has been transferred to the Upper West Region list.

## Upper East Region (10)

Bawku	Navrongo	Tongo (PA)
Bolgatanga	Paga	Zebilla (PA)
Bongo (PA)	Pusiga (PA)	
Garu (PA)	Sandema (PA)	

Compared to the 2015 list, there are no changes.

## Upper West Region (17)

Babile (PA)	Jirapa	Tumu
Bole	Kaleo	Tuna
Fielmuo Old (PA)	Lawra	UDS (Wa)
Funsi (PA)	Nadowli	Wa (main)
Gbwollo	Nandom	Wechau
Hamile	Regional Head Secretariat	

Compared to the 2015 list, **Gbwollo** (capital of Sissala West Region, Gwolu/Gwollu on maps, 19 miles W of Tumu, 10.98°N, 2.22°W ), **Kaleo** (Nadowli-Kaleo District, 8 miles N of Wa, 10.18°N, 2.54°W), **Regional Head Secretariat** (Wa Municipal District digital address code) and **Wechau** (capital of Wa West District, 17 miles SW of Wa, 9.83°N, 2.68°W) have been added. Bole has been transferred from the Northern Region list.